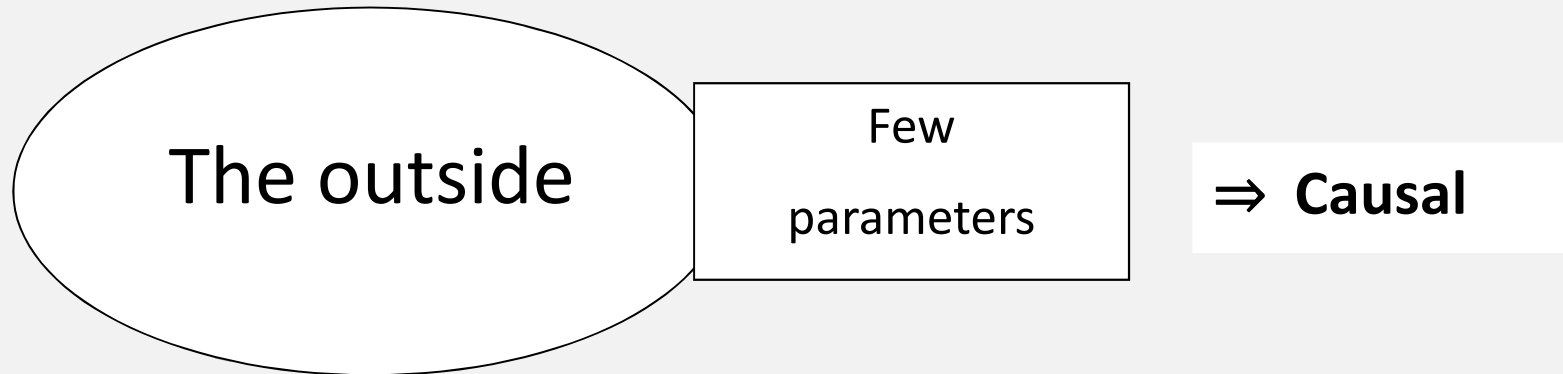


The search for a Model of Origin!

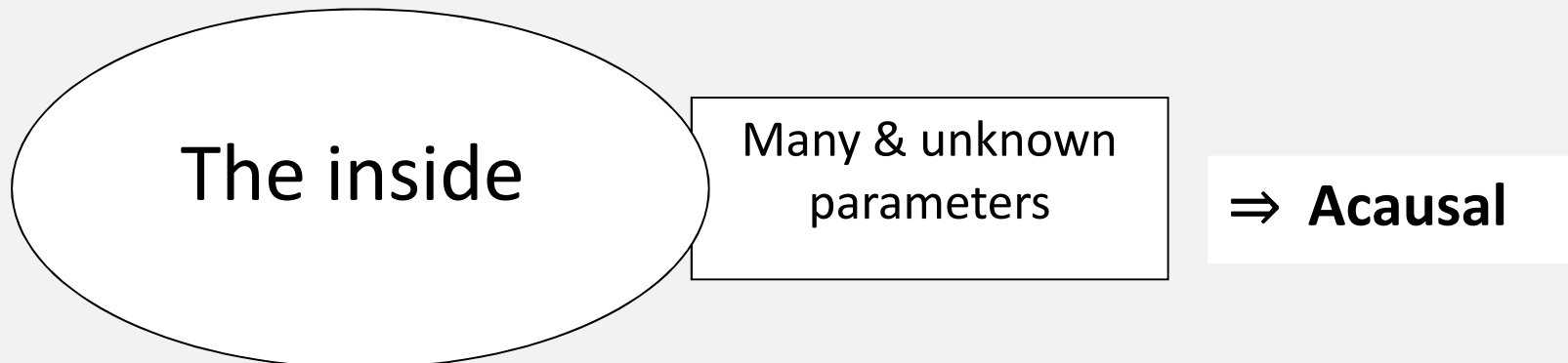
What drives
the forces of Matter?

www.ontheorigin.com

Current Physics only sees:



New Physics seeks:



With G∞D we look for the foundations of a New Paradigm!

Present paradigm

versus New paradigm

Appearance

Transparency

Study of the behavior

Study of the Nature



Coincidence



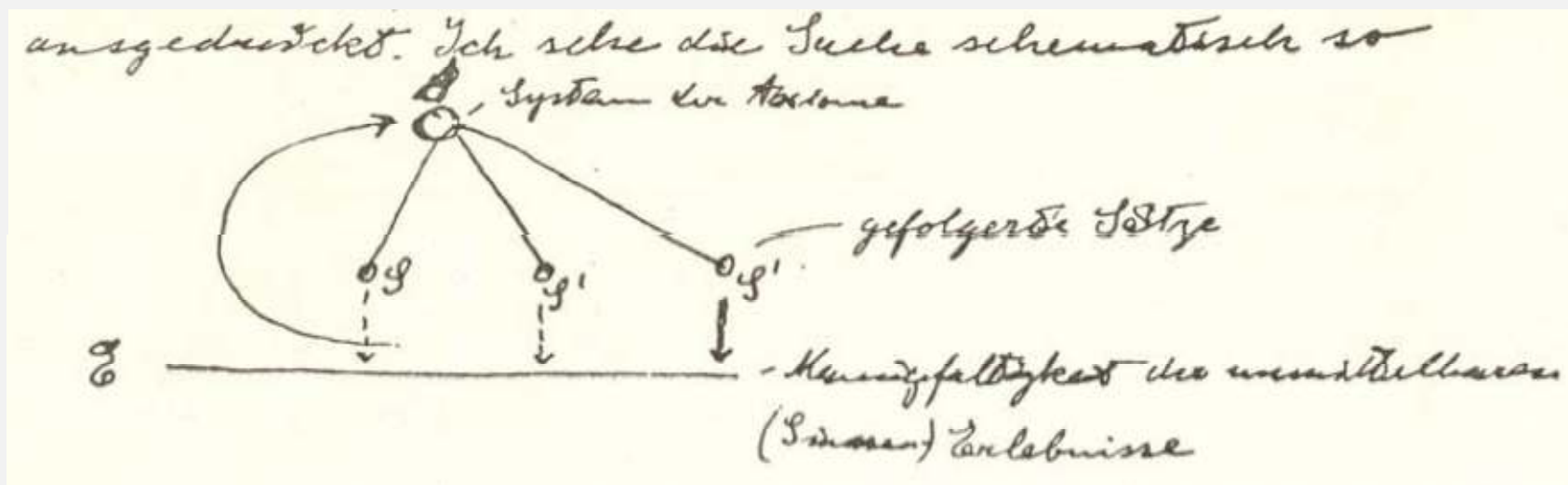
Soul = connectivity that transcends space and time

The Holistic thinking could
never develop any authority

because

it didn't find any solution
as Einstein suggested!

(to his friend Solovine)



Already in 1953, two years before his death,
Einstein wrote
that a mathematical quest is hopeless.

His solution:

- 1) Find the proper axioms (i.e. Holism comes in first place, it is **the leader**).
- 2) On that basis develop propositions that are experimentally verifiable (**reality is in the centre**).
- 3) Based on these findings, find the appropriate mathematics and build New Physics (in which the Analytic is **the servant**).

We are looking
for **one needle**
in 100 haystacks!

?

In which haystack do we find **the key**
to our quest for the origin of the Laws of
Physics (and the other ones)?

When you're looking in the wrong haystack
you won't find the key!
That is what current Physics experiences.

Can we reach with G∞D
the right mental setting to discover
an appropriate axiom?

“Impossible” isn't a fact,
it is an opinion!

After years of puzzling
only one haystack remains: **time!**

Time shows **an irreversible course**.
This made the emergence of life possible.

There is no mathematical description for time.

Ilya Prigogine, 1967 & 1995

Who has imperceptibly
with disastrous consequences
been tampering with our vision on time?

The culprit is called **Minkowski**. In 1908 he determined the relation between space and time in a mathematical formula:

$$s^2 = x^2 + y^2 + z^2 - t^2$$

This equation hides an imaginary factor:

$$i = \sqrt{-1}$$

To make calculations possible Minkowski putted that imaginary factor

in the coordinates

thus it could be eliminated:

$$i^2 = -1$$

$$s^2 = x^2 + y^2 + z^2 - t^2$$

Considerations:

Minkowski chose to describe
the Laws of Physics!

Thus their origin escaped to us.
This way we evaded the importance of
the **imaginary character of time!**

An imaginary dimension demonstrates
irreversible course. The only dimension
from which we still see that effect is **time**.

The initial dimensions were
imaginary and **real predimensions**.

Imaginary predimensions are courses:
only one course of time exists so
the other courses have to be **courses of space**.

A course is a tendency to irreversibly
progression in a certain direction!

One Axiom tells us what's going on:

An 'imaginary' predimension is losing **data**
or has a tendency to do so.

This allows the emergence of a **course**.

A 'real' predimension has a tendency
to maintain data.

This causes the formation of **a memory**.

Suspicion 1:

All courses are situated inside matter: the courses of space shape it, generate its **energy** and drive its **forces**.

The predimensions without a course are situated outside matter and create a universal and absolute **frame of reference**.

⇒ The affinity of some courses with this frame of reference creates **rest mass** and **charge**.

Because of the loss of data
each course has:

- an imaginary opposite
- and a real complement.

Suspicion 2:

Three kinds of predimensions where united in a so-called **Core-dimension** in a so-called **pre-Cosmic condition**.

Several Core-dimensions existed.

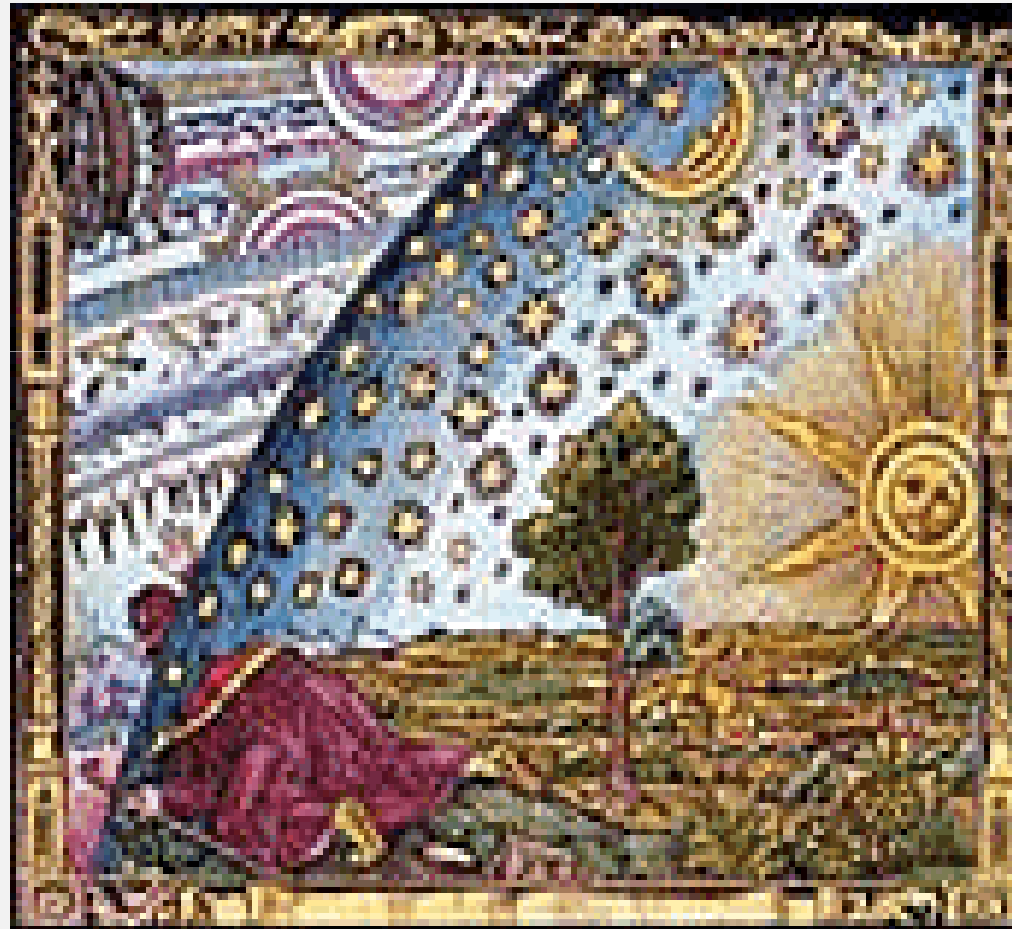
Non uncorded courses
constitute a potency!

Consequently our

Thesis is:

All Core-dimensions together shaped
an **utmost POTENCY**:
the **pre-Cosmos**.

Can we now look behind
the curtain of the Origin?



Before the first Core-dimension uncorded
SIMULTANEITY ruled

After the first Core-dimension uncorded
NON-LOCALITY ruled

This way the thesis becomes:

From this **pre-Cosmos** the Universe
and the Laws of Physics emerged!

When the first Core-dimension uncorded
the course of time was liberated
and this ruptured absolute **SIMULTANEITY**.

When the other Core-dimensions uncorded
the courses of space where liberated and
this ruptured absolute **NON-LOCALITY**.

POTENCY

became

Matter

pre-Cosmos

became

Universe

SIMULTANEITY

became

Now

NON-LOCALITY

became

Here

With the creation of Matter

the predimensions joined.

Inside Matter this led to a limited presence of **SIMULTANEITY** and **NON-LOCALITY**.

These limited pieces of POTENCY create an immaterial label.

They are **RESPONSIBLE FOR COHERENCE**.

The influence of this label is situated outside Here and Now and thus is not directly detectable with our scientific instruments.